



Elevate Your Space

Contents



03

INTRODUCTION

First impressions
How we roll

04

OUR ARTISTS

Get to know the local and international artists that roll with us, including their artwork.

33

DESIGN FILES

A collective of studio-based designers. Murals that are customizable and scalable to fit your needs.

37

OUR MATERIALS

Why you'll love artmurale wallpapers and murals.

38

ROLL WITH US

How to become an artmurale artist and get in touch with us.
Designer trade program

39

LET'S ROLL!

Contact information

Introduction



First impressions

IT TAKES 7 SECONDS TO MAKE A FIRST IMPRESSION

Human beings are built to size each other up quickly. The same can be said about an interior, space, and environment.

Spaces have the potential to take you anywhere, to a place you've never visited, a comforting memory, or a bold new inspiring world—dealer's choice.

Our wallpaper designs and patterns are created to inspire, help you express your intentions, and bring visions to life.

Every space tells a story. What does yours say?

How we roll

CREATIVE AND ACCESSIBLE DESIGN EXPERIENCES

Artmurale offers wallpaper and mural installations for residential and commercial spaces. Our designs range from size, image, and original art to customization, maximizing any space's visual impact. We work with various materials for homes, retail environments, and commercial and public spaces.

We showcase our appreciation for art and community through vibrant, unique designs, promoting a collective of local and international artists. We connect, empower, and help creatives make their art accessible.

If you have a wallcovering vision, we'll make it happen.

We're born and bred in Montreal, but our artists are all over the world. Our products are proudly printed to order in Canada using selected eco-friendly materials.

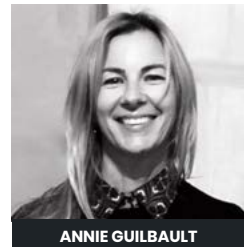


Our Artists

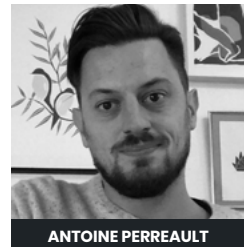
Meet our artists



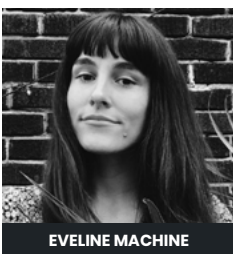
ADIDA FALLING ANGEL



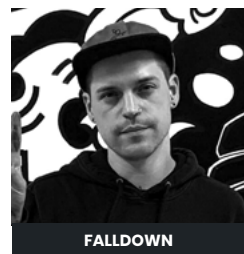
ANNIE GUILBAULT



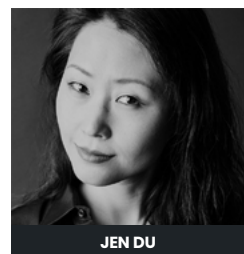
ANTOINE PERREAULT



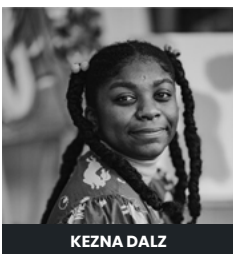
EVELINE MACHINE



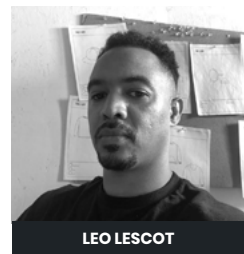
FALLDOWN



JEN DU



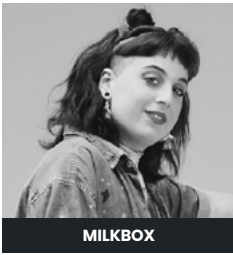
KEZNA DALZ



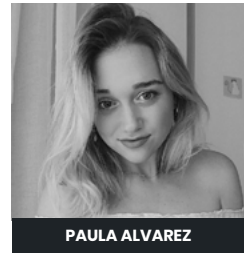
LEO LESCOT



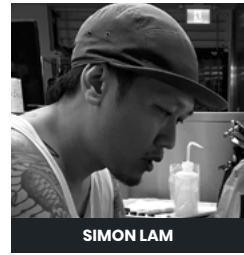
MARIE-CHANTAL MILETTE



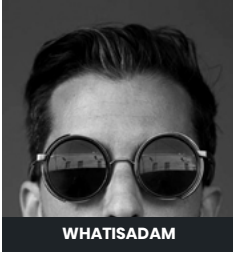
MILKBOX



PAULA ALVAREZ



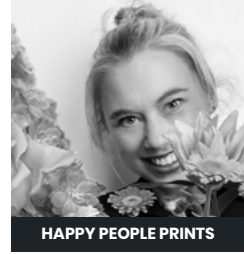
SIMON LAM



WHATISADAM



AUORE DANIELOU



HAPPY PEOPLE PRINTS



FLOW OF THOUGHT

Adida Falling Angel

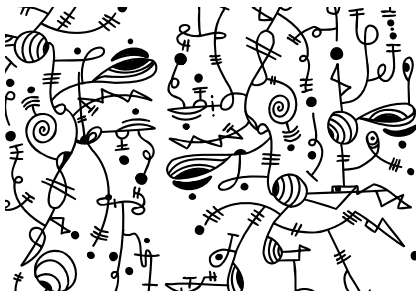
URBAN ARTIST

Born in Israel, Adi Khavous also known as Adida Fallen Angel would best be described as an adventurous and insatiable character. Adida has spent the last 15 years traveling, residing in places such as Brazil, New York, San-Diego, Rotterdam, Berlin, Paris, and is now settled in Montreal (for the moment). A multi-faceted artist, he went from making classical art and sketching to exploring photography, cinematography, graphic design, street art, and now, is getting involved in music. In the past decade, Adida has been increasingly passionate about street art, graffiti, and art installations—gravitating towards large-scale murals using spray paints and detailed brushwork.

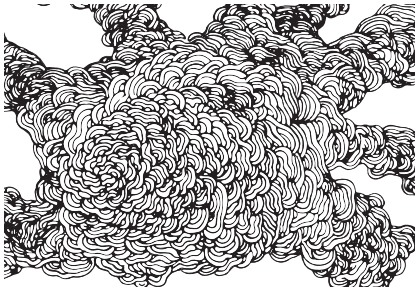


FINISHING

- Prepasted Removable Smooth
- Vinyl Matte Smooth
- Vinyl Embossed Linen
- Non-Pasted Commercial



Flow of thought



Microcosmos



Connections

Annie Guilbault

INTERIOR DESIGNER

At the age of 7, Annie began making furniture to the scale of her Barbie dolls with the wood scraps that were used to finish the basement of the family Bungalow in the Quebec Eastern Townships. A few decades later, she designed a furniture line with a Quebec manufacturer which is distributed internationally. She advocates contemporary and classic design. Utilitarian, organized, and timeless spaces are Annie's signature style. She is constantly amazed and inspired by the sublimity of nature – colourful, pure, and genuinely beautiful.



COLLECTION

Cristal

FINISHING

Prepasted Removable Smooth
Vinyl Matte Smooth
Vinyl Embossed Linen
Non-Pasted Commercial



Rose tea

Ice land

Fluorite

COLLECTION

Intention

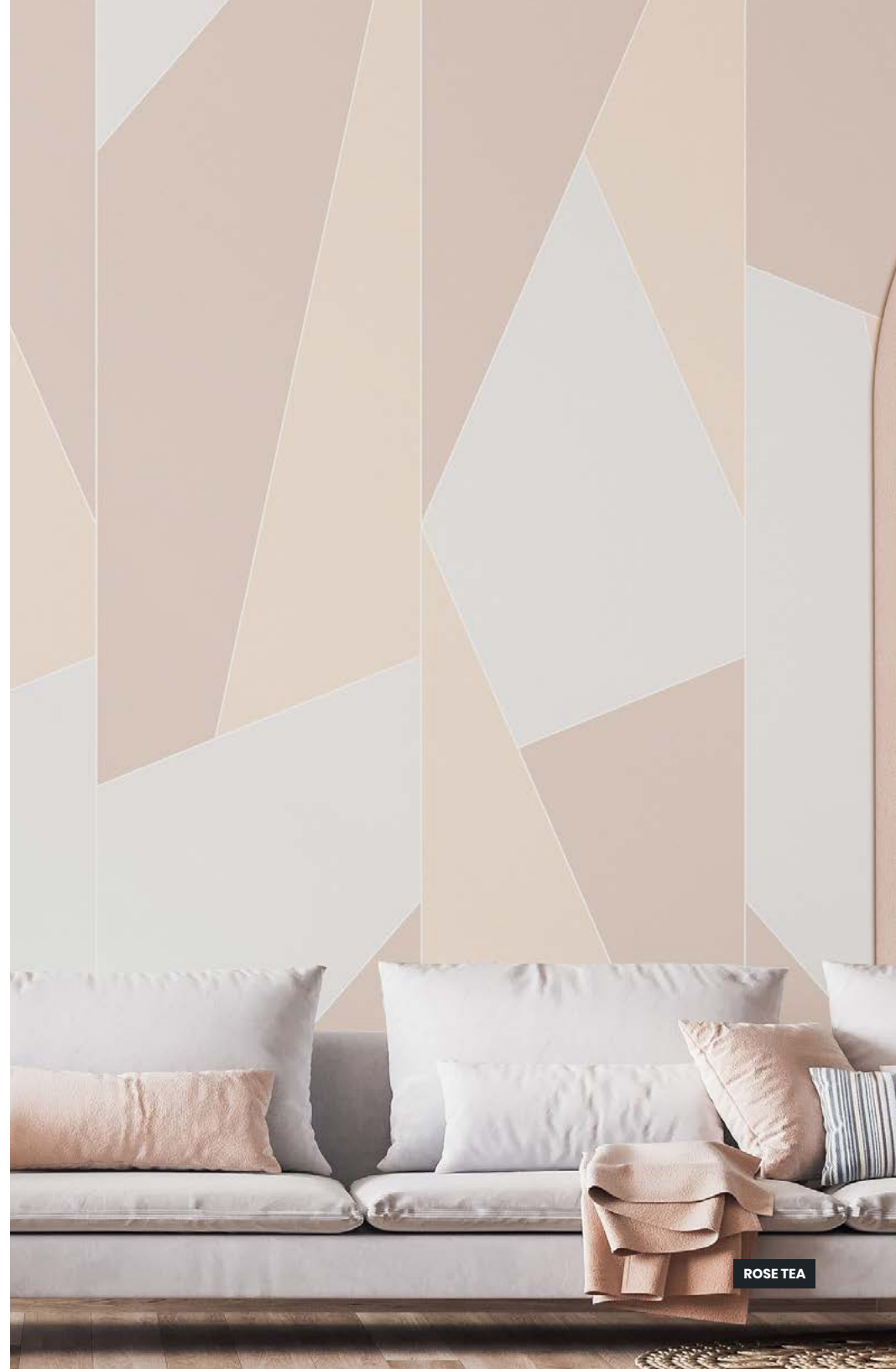


Blue

Green

Brown

Burgundy

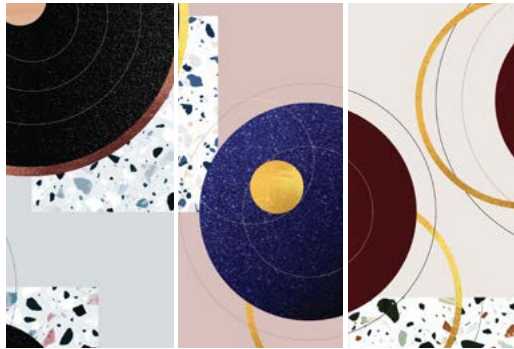


COLLECTION
Daily Treat

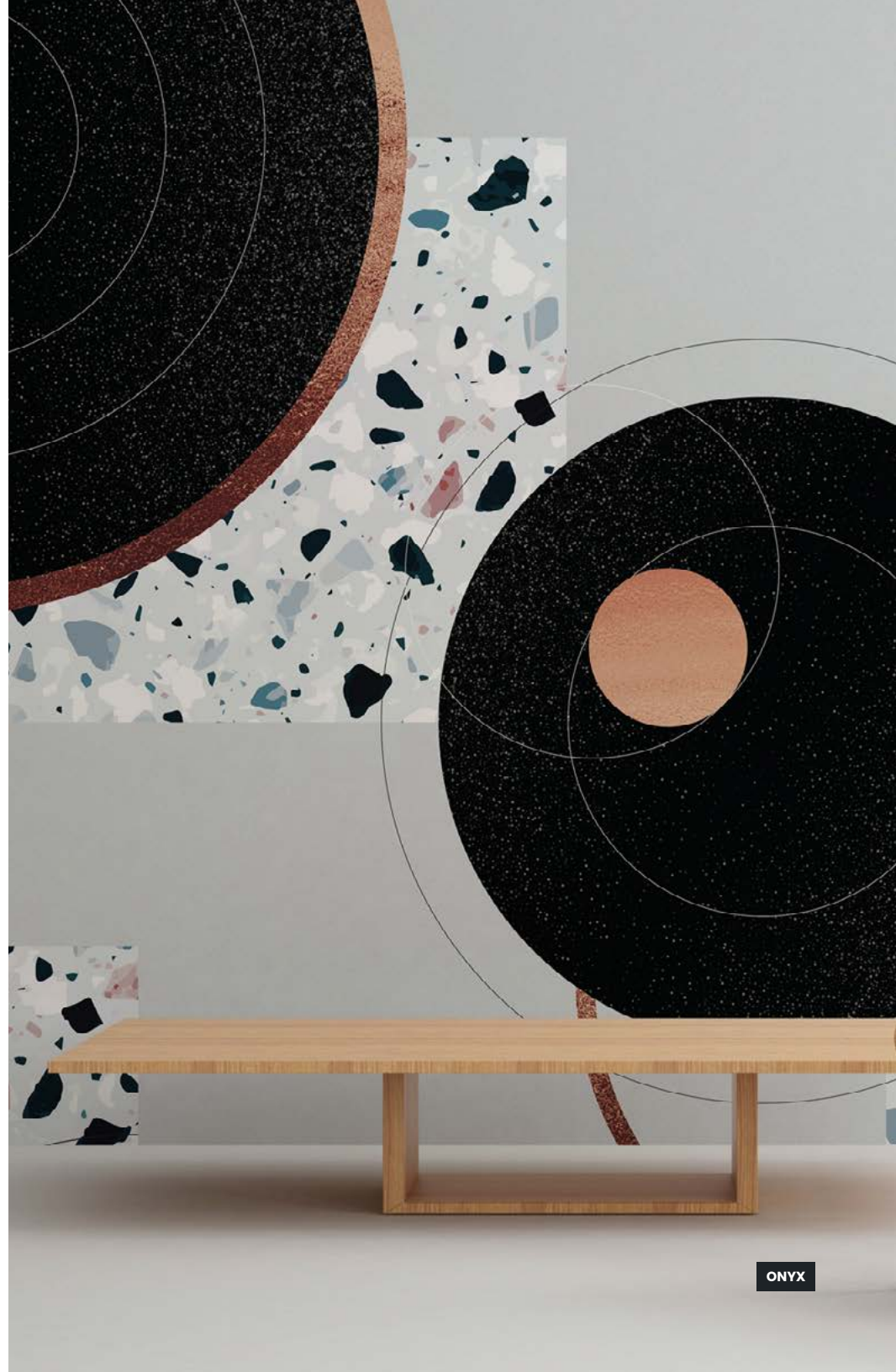


Popsicle Makeup Mint & Chocolate Green Martini

COLLECTION
« O » Terra



Onyx Sapphire Ruby





DIM LIGHT

Antoine Perreault

DESIGNER AND MURALIST

Antoine Perreault is a French-Canadian designer and muralist based in Montreal. Antoine began as a graffiti artist in 2000 and since has added designer, muralist and active member of the art collective "Les frères Lama" to his resume. His style is best described as a mixture of modern graffiti and abstract art.

Antoine's approach to art is a balance of precision and impulse. As a designer, his attention to detail is unmatched but as a muralist, he lets his impulse takeover. His freestyle work allows for shapes and patterns to be born that are representative of his distinctive and signature style.



FINISHING

Prepasted Removable Smooth
Vinyl Matte Smooth
Vinyl Embossed Linen
Non-Pasted Commercial



Dim light



NEON

Eveline Machine

ILLUSTRATOR AND DESIGNER

Kathy Poirier is the artist behind Eveline Machine. She's based in Montreal, Canada and inspired by everything surrounding her. Passionate about travelling, arts and nature, she finds magic in the little things of everyday life.



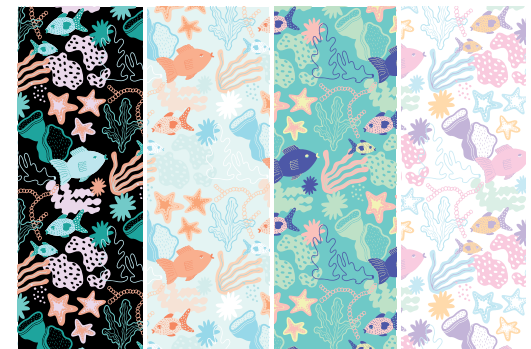
After working for several years in fashion and graphic design, she is now teaching textile creation, has her own stationery collection and makes animations. She's a big fan of animals, cosmos and pastel colors—loves to create illustrations and animations inspired by these themes—all of this with a spark of absurdity and airiness to make you smile.

COLLECTION

Atlantic Dream

FINISHING

Prepasted Removable Smooth
 Vinyl Matte Smooth
 Vinyl Embossed Linen
 Non-Pasted Commercial



Neon

Soft

Tropical

Pastel

COLLECTION

Turtle Island



Neon

Mousse

Soft

Bonbon



COLLECTION

Bon Voyage



Punch

Dunes

Azure





Falldown

URBAN ARTIST

Falldown started drawing on t-shirts with sharpies over a decade ago. The Ottawa-based urban artist, uses cartoon-based drawings and stylized lettering artwork to provide his audience with a brief encounter with color and joy. Falldown's murals, window paintings, decorated clothing and commissioned work are picking up momentum in major Canadian cities. Former owner of Fall Down Gallery, a space dedicated to street-style art, the artist turned his passion for spray paint culture and freehand drawing into punchy everyday settings that can be seen in all kinds of unexpected spaces. His unique style is playful and family-friendly, giving off nothing but good vibes. When he's not working you can catch him making TikTok videos with his daughter, Rukha.



COLLECTION

LIT

FINISHING

- Prepasted Removable Smooth
 - Vinyl Matte Smooth
 - Vinyl Embossed Linen
 - Non-Pasted Commercial
-



LIT



Jen Du

ILLUSTRATOR AND DESIGNER

Jen Du is an illustrator, creative designer, and multi-discipline artist based in Beijing, China.



Her artworks focus on modern geometric abstractionism. She uses geometric shapes and vibrant colors to create abstract views, landscapes, figures, and moods. She worked in the architecture and fashion industry for more than a decade, which both became her inspiration when creating artwork. Her modern geometric abstract artworks have been used for advertising campaigns, packaging, music and book covers, clothing, and products for clients from all over the world.

FINISHING

- Prepasted Removable Smooth
- Vinyl Matte Smooth
- Vinyl Embossed Linen
- Non-Pasted Commercial



Heatwaves



Good mood



Hopscotch



Vivid



Tropical place



IN THE CLOUDS



In the clouds



Dream paradise



Pink





GROOVY GARDEN

Kezna Dalz

ARTIST AND DESIGNER

Kezna Dalz, also known professionally as Teenadult, is a multidisciplinary artist based in Tio'tia:ke (Montreal). Her work mostly consists of painting and digital illustration. We recognize it by the raw brush traits and use of bright colors. The recurring themes addressed in her work are feminism, self love and self care, emotional vulnerability and anti-racism. She sometimes tackles difficult subjects, making them accessible through a pastel and soft universe with naive features. Representation of black people and black culture in her work is considered a priority to her, as she grew up noticing a major lack of it in art and other spheres in general that is still very much present.

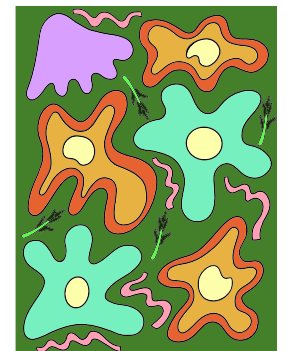


FINISHING

Prepasted Removable Smooth
Vinyl Matte Smooth
Vinyl Embossed Linen
Non-Pasted Commercial



Groovy garden



Flower mash

Leo Lescot

ILLUSTRATOR AND DESIGNER

Leo Lescot is the creative force behind Fine & Dry; a creative studio focused on graphic design and merchandise. He has collaborated with numerous establishments designing original artwork for various products, from coffee roasters to restaurants and design studios. His design approach conveys the project's objectives in a minimal clean style.



COLLECTION

Endless Tree

FINISHING

Prepasted Removable Smooth
Vinyl Matte Smooth
Vinyl Embossed Linen
Non-Pasted Commercial



Green

Blue

Purple



PURPLE



PASTEL

Marie-Chantal Milette

COLOR EXPERT AND ILLUSTRATOR

Growing up, Marie-Chantal Milette wanted to name colors in paint stores. Today, she's one of the few color experts in the world — she owns and operates the color agency Kryptonie, in Montreal, Canada.



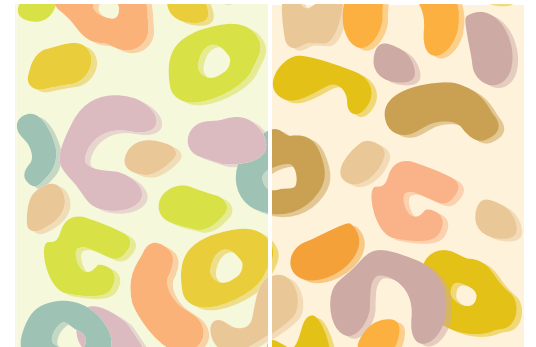
The entrepreneur still loves to doodle and draw characters with her kids, a fun little escape from the corporate world. Marie-Chantal graduated in graphic design and advertising from The Creative Circus, in Atlanta, Georgia. She also followed an advanced color psychology training course with Leatrice Eiseman, Director of the Pantone® Color Institute and world leader in color psychology and trend prediction.

COLLECTION

Leopoldine

FINISHING

Prepasted Removable Smooth
Vinyl Matte Smooth
Vinyl Embossed Linen
Non-Pasted Commercial



Pastel

Peachy

COLLECTION

Float



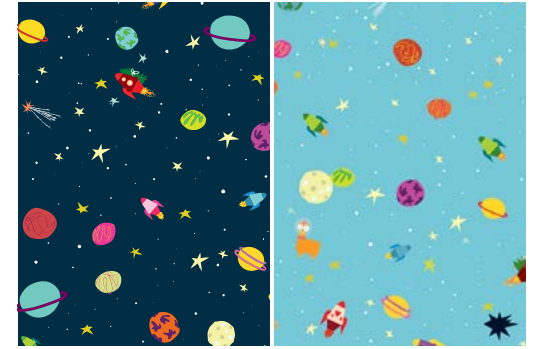
Float



NENUPHAR

COLLECTION

Starships

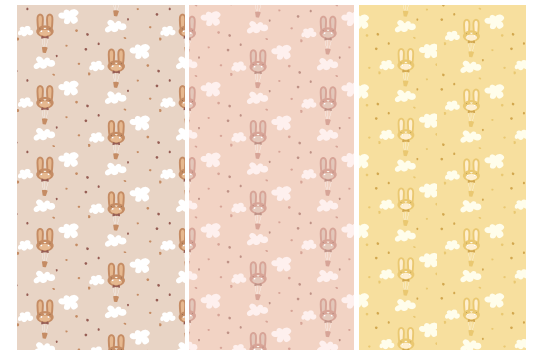


Night sky

Sunny day

COLLECTION

Bunzies



Mocha

Dusty rose

Custard

COLLECTION

Flower Power



Nenuphar

Mustard

French blue



COLLECTION

Nested



Vibrant

Earthy

COLLECTION

Grosse Vie



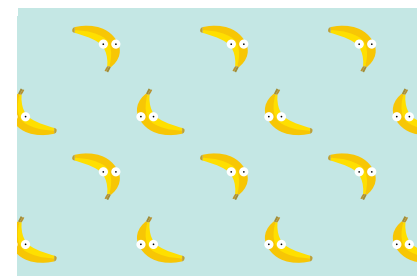
Celeste

Pudding

Rose

COLLECTION

Nanas



Nanas

Paula Alvarez

DESIGNER AND ILLUSTRATOR

Paula Alvarez is a Spanish designer and illustrator based in West London. Paula began drawing at the age of 6, and by 11, she discovered her passion for drawing detailed portraits.



The years following were spent developing her artistic skills and earning a Fine Arts and Design degree from the University of Seville. Upon finishing her degree, Paula shifted from hyperrealism into more contemporary art, after securing a role working as an apprentice to Arturo Comas. It was with Comas that Paula found her unique style, signature colors and playful designs. Paula now spends her days making vibrant watercolours and picturesque illustrations.

FINISHING

Prepasted Removable Smooth
Vinyl Matte Smooth
Vinyl Embossed Linen
Non-Pasted Commercial



Swallows



Miranda





Sunset



Jungle



SUNSET

Milkbox

MURALIST, ILLUSTRATOR AND SCULPTURE

Milkbox is a Montreal-based muralist and illustrator who creates surreal narratives about femmehood. Her work focuses on exploring themes of identity, sexuality, mental health, and self-love while featuring animals and nature. While her passion is painting murals, she also has a diverse portfolio consisting of projects such as advertising, community projects, books, editorial work, packaging design, live painting, and direct-to-consumer sales.



FINISHING

Prepasted Removable Smooth
Vinyl Matte Smooth
Vinyl Embossed Linen
Non-Pasted Commercial



Lemon



Lemon



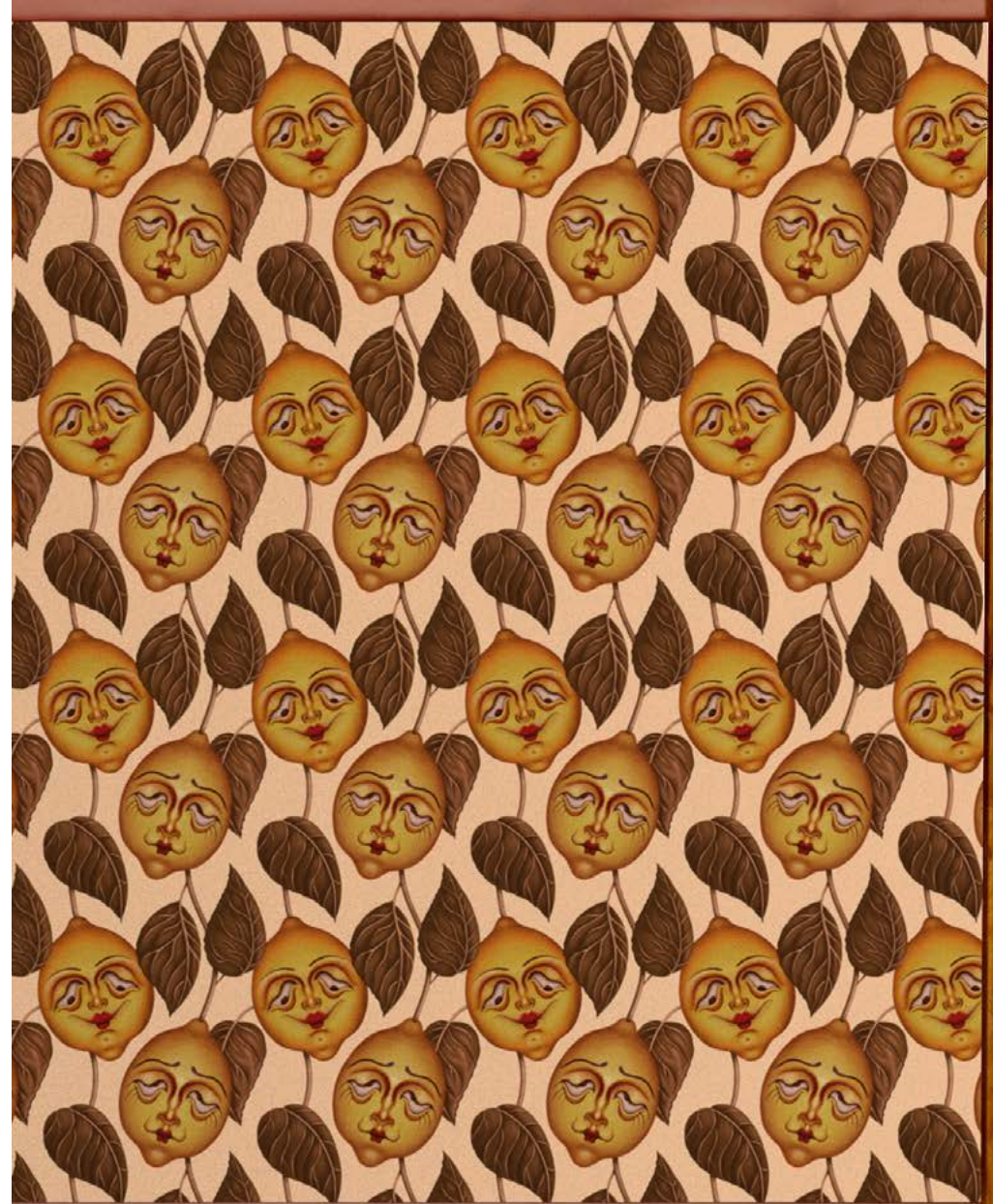
Lemon



Lemon



Lemon



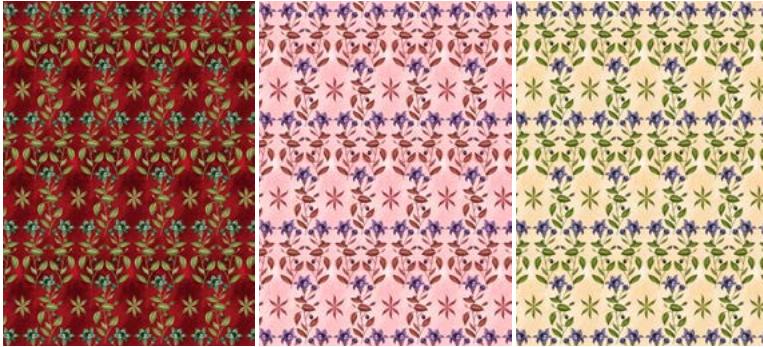
COLLECTION

Flower



Night sky

Sunny day



Night sky

Night sky

Sunny day

COLLECTION

Bird

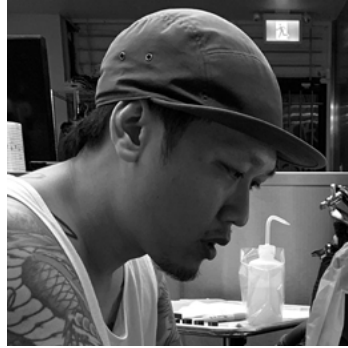


FLOWER

Simon Lam

TATTOO ARTIST, ILLUSTRATOR AND DESIGNER

Inspired by traditional Chinese art, skulls, reptiles, and so much more, Simon Lam is a tattoo artist, illustrator and graphic designer. He co-owned and ran a printshop for years before opening Nirvana, a tattoo shop in the heart of Chinatown, Montreal. As a creative, Lam has his mark all over the city. From tattoo convention posters, to restaurant logos and merch — he's just getting started.



FINISHING

Prepasted Removable Smooth
Vinyl Matte Smooth
Vinyl Embossed Linen
Non-Pasted Commercial



Peonies



PEONIES

Whatisadam

CANADIAN URBAN ARTIST

Infused with Canadian imagery, Whatisadam's style is reminiscent of vintage comics and pop art. Depictions of North American wildlife and landscapes are common themes within his work but are always reimagined to feature elements of urban culture, as seen in his maple 'sizzurp' cans, tattooed ducks and hockey hoodlums. Whatisadam has collaborated with many organizations such as Osheaga, Sprite, Hennessy, Roots Canada and many more.



MY LOVE (EXTENDED)

COLLECTION

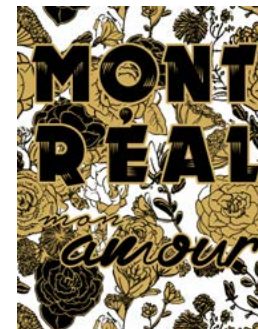
Flowers

FINISHING

Prepasted Removable Smooth
Vinyl Matte Smooth
Vinyl Embossed Linen
Non-Pasted Commercial



My love (extended)



My love



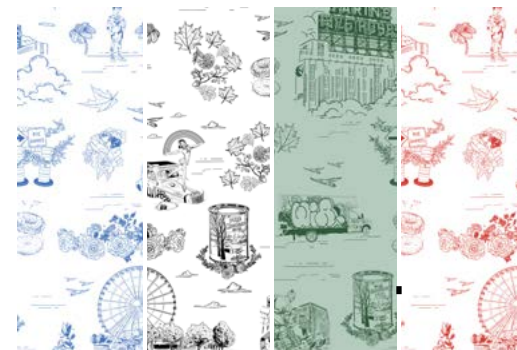
Summer vase



BLACK

COLLECTION

Montreal



Blue

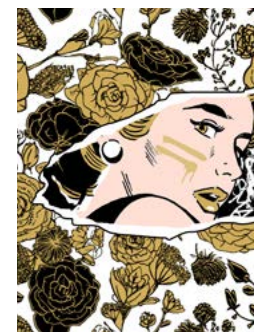
Black

Green

Red

COLLECTION

Torn



Gold edition

COLLECTION

Maple Syrup



Maple Syrup



PATCH WORK SERIES

COLLECTION

Patch Work Series



Patch Work Series





COSMOS

Aurore Danielou

WALLPAPER DESIGNER, DECORATIVE ART DESIGNER

Wallpaper Designer, Decorative Art Designer and illustrator, Aurore Danielou's work revolves around the creation of patterns for wallpaper, textiles, packaging and the creation of unique illustrations. A Baroque and elegant style where humor often has its place in a modern vintage style. Aurore's creations are tailor-made, with painted murals, wallpapers, windows and other visual creations for mainly commercial projects, such as stores, restaurants, bars but also cosmetics, scenography, packaging and art to live.



FINISHING

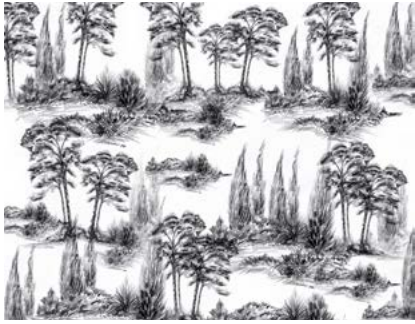
- Prepasted Removable Smooth
 - Vinyl Matte Smooth
 - Vinyl Embossed Linen
 - Non-Pasted Commercial
-



Fleur²



Cosmos



Pinède



Colombe

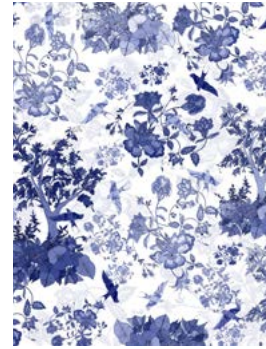


Pinède



Colombe





Forêt enchantée
Blue



Forêt enchantée
Black



Forêt enchantée
Red



Dans les bois
Blue



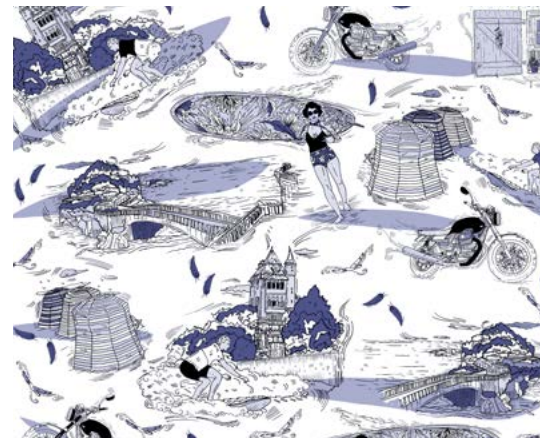
Dans les bois
Black



Dans les bois
Ochre



SURF



Surf

Happy People Prints

URBAN ARTIST

Mariëlle Scheffer is a Dutch designer and illustrator based in Amsterdam, NL. Mariëlle has a background in interior- and product styling, graphic design, and communications.

Mariëlle founded her company, Happy People Prints, to create vibrant prints that make people happy, and bring color to the forefront. Inspired by nature, birds, flowers, and vintage botanical books, Mariëlle spends her days in her canal-facing studio in Amsterdam where she creates her unique prints. Her designs are not limited to just wallpaper but also are featured on fabrics, stationery, and more.



FINISHING

Prepasted Removable Smooth
Vinyl Matte Smooth
Vinyl Embossed Linen
Non-Pasted Commercial



Jungle paradise



Out of Africa - Leopard



Under the sea



JUNGLE PARADISE



Paradise



Birds and butterflies

COLLECTION

Parrot Paradise



Pink



Blue



Design Files

Design Files

Design Files is a collective of studio-based designers. They explore and expand creative concepts from photography, illustration, and graphic design. The Design Files are integral to artmurale's DNA and our custom work services. If you have a wallcovering vision, we'll make it happen.



COLLECTION

Book Spines

FINISHING

Prepasted Removable Smooth
Vinyl Matte Smooth
Vinyl Embossed Linen
Non-Pasted Commercial



Encyclopaedia Botanica



Hard cover



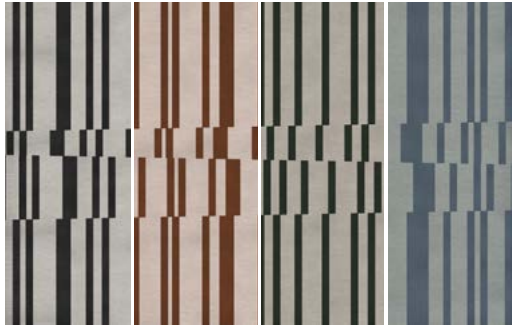
First edition



COLLECTION

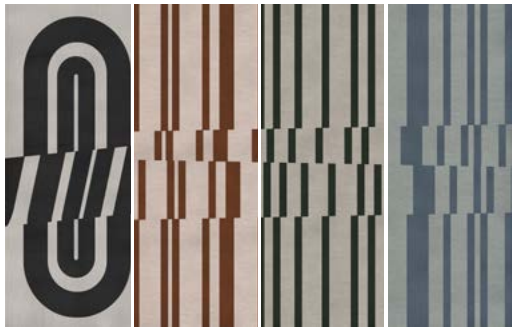
Palazzo Lounge

NINO



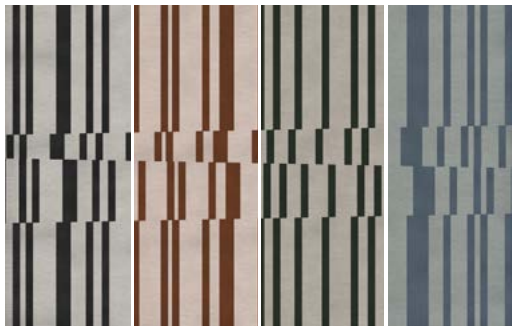
Black sambuca Brown cow Solid olive green Industrial steel

CARA



Black sambuca Brown cow Solid olive green Industrial steel

FRANKIE



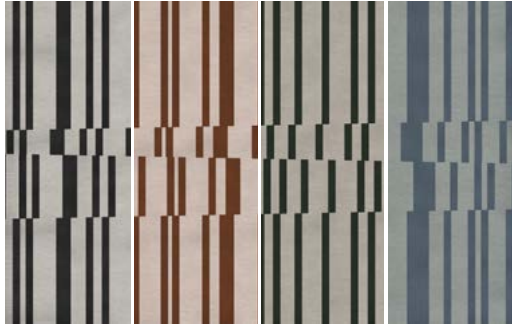
Black sambuca Brown cow Solid olive green Industrial steel



CARA - BLACK SAMBUCA

COLLECTION

Palazzo Lounge



Black sambuca Brown cow Solid olive green Industrial steel

DOMENICO



Brown cow Solid olive green Industrial steel

GLORIA



GLORIA - INDUSTRIAL STEEL

Our Materials

We offer our wallpaper designs in materials for residential, commercial environments and public spaces.

Our standard wallpaper rolls vary from 26 to 32 inches wide and our commercial rolls are available in 52 inches wide.

Our patterns are primarily a straight match, but we can also produce custom roll lengths. This allows our clients to order only the length they need to reduce waste. We aim for as little of our wallpaper as possible to end up in landfills.

Contact us for more information or custom requests.

hello@artmurale.com



Prepasted Removable Smooth

- Matte finish
- DIY-friendly, great for homes, rental spaces or temporary art
- Recommended for schools, daycares and hospitals
- Durable with a water-activated adhesive backing, wet and apply
- Fully removable and 100% recyclable
- For smooth, flat, non-textured surfaces
- Odor- and PVC-free
- Mold and mildew resistant
- GREENGUARD Children & Schools Certified (with HP Latex inks)



Vinyl Matte Smooth

- Smooth matte texture
- DIY-friendly, great for upgrading rooms and temporary spaces
- Self-adhesive with peel and stick backing
- Removable and washable with mild soap and water
- For smooth, flat, non-textured surfaces
- Eco-friendly solvent, latex and UV
- PVC-free
- Fire resistant (ASTM E84 Class 1)



Non-Pasted Commercial

- Subtle leathered texture, matte finish
- Paste required and professional installation recommended
- Recommend for high-traffic areas: playrooms, bathrooms, restaurants and office spaces
- Paste-activated and highly durable
- Works with standard primers and pastes
- Scrub and scratch resistant
- PVC-free
- Mold, mildew and flame resistant
- Fire resistant (ASTM E84 Class 1)
- Type II wallcovering certification printed with HP Latex inks



Vinyl Embossed Linen

- Subtle woven linen texture
- DIY-friendly, great for upgrading rooms and temporary spaces
- Self-adhesive with peel and stick backing
- Removable and washable with mild soap and water
- For smooth, flat, non-textured surfaces
- Eco-friendly solvent, latex and UV
- PVC-free
- Fire resistant (ASTM E84 Class 1)

Designer trade program

We have a trade program developed for designers. It's also open to architects, developers, set designers, home-stagers, hospitality and food beverage professionals, and other commercial businesses.

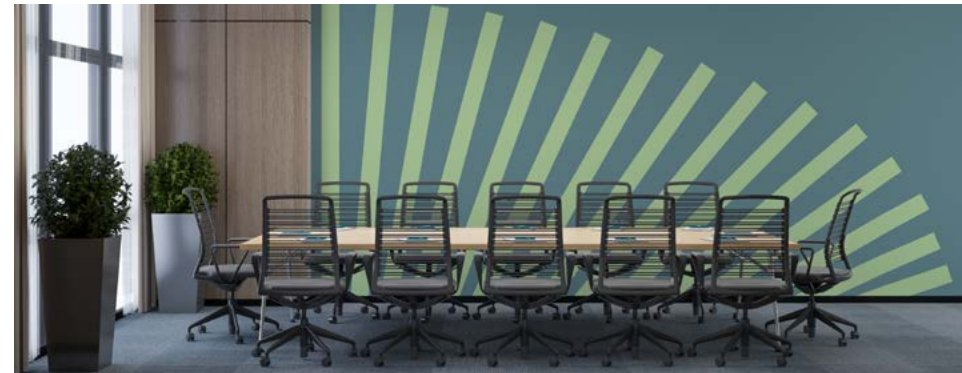
As a Program Member, you have exclusive access to competitive pricing, and our team is on hand to help with custom orders. We offer our products and designs on various materials for homes, retail environments, public spaces, and other commercial settings.

Apply and become a member on our website.



Roll with us

Artmurale is born and bred in Montreal, Canada, but our artists are all over the world, and that's how we like it! We're always on the lookout for new designers, artists, photographers, and illustrators, so we can offer a curated, exclusive selection of wallpaper patterns, wall murals, and related products to our customers.



Become an artmurale artist

If you connect with our brand and are interested in joining us, please submit your design or a sample of your work. If there's a fit, we'll help turn your art into wallpaper using your original files or high-definition images. Our digital printing technology gives us endless possibilities! We also work with artists to create live art installations.

Let's roll!

READY TO CUSTOMIZE YOUR SPACE? LET'S ROLL

Still have questions? Wanna roll with us? We're always happy to help.

If you're an artist or designer interested in a partnership with artmurale, get in touch or submit a sample of your work.

hello@artmurale.com

